

TECHNICAL SPECIFICATIONS

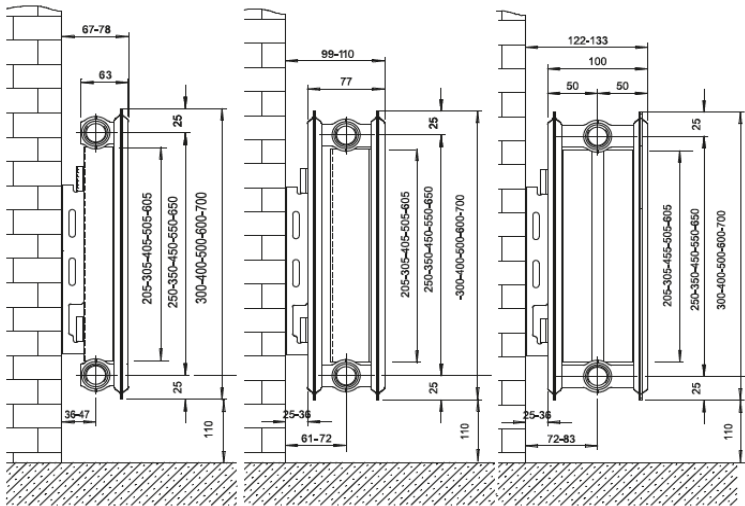
EcoRad



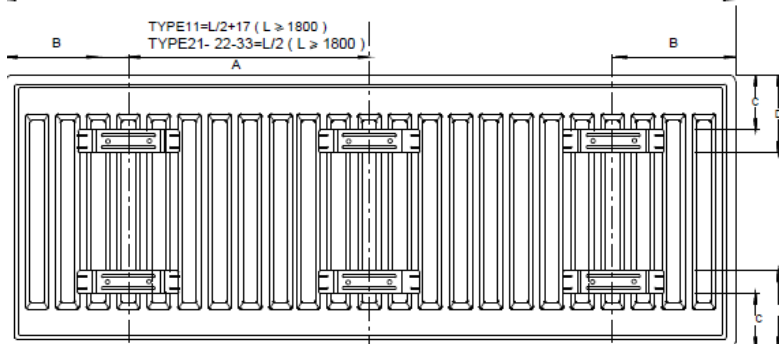
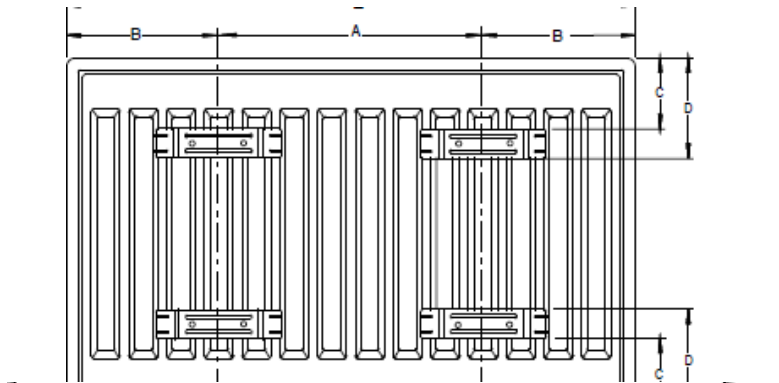
WATER TREATMENT

It is strongly recommended on completion of installation the system be properly flushed and filled with Instinct chemicals in accordance with the British Standard code of practice for the Treatment of Water in Domestic Hot Water Central Heating Systems BS 7593

- Heat Outputs Certified to EN442
- Manufactured under EN ISO 9001
- Outputs Tested at Delta T50
- Low Water Content
- Operating Pressure 10 Bar (Tested to 13 Bar)
- Paint Colour RAL 9016
- Powder Coated Finish
- 10 Year Warranty



RADIATOR TYPE	RADIATOR	WEIGHT	WATER
	HEIGHT	kg/m	CONTENT l/m
Type 11	300	9.3	1.87
	400	12.1	2.24
	500	14.8	2.62
	600	17.6	3
	700	20.4	3.38
Type 21	400	19.2	4.27
	500	23.6	5.03
	600	28.5	5.8
	700	33	6.47
Type 22	300	16.7	3.6
	400	22.1	4.37
	500	27.5	5.13
	600	33	5.9
	700	38.2	6.57



RAL9016

E&OE

SUSPENSION BRACKETS DIMENSIONS

L (mm)	A (mm)		B (mm)		C (mm)	D (mm)	Set of Lugs
	Type 11	Type 10,21,22,33	Type 11	Type 10,21,22,33			
400	166	134	117	133	60	85	2
500	200	234	150	133	60	85	2
600	300	334	150	133	60	85	2
700	400	434	150	133	60	85	2
800	500	534	150	133	60	85	2
900	600	634	150	133	60	85	2
1000	700	734	150	133	60	85	2
1100	800	834	150	133	60	85	2
1200	900	934	150	133	60	85	2
1400	1100	1134	150	133	60	85	2
1600	1300	1334	150	133	60	85	2
1800	767	767	150	133	60	85	3
2000	867	867	150	133	60	85	3
2200	967	967	150	133	60	85	3
2400	1067	1067	150	133	60	85	3
2600	1167	1167	150	133	60	85	3
2700	1217	1217	150	133	60	85	3
2800	1267	1267	150	133	60	85	3
3000	1367	1367	150	133	60	85	3

10 YEAR WARRANTY